

4 INDIAN HEAD ROAD
KINGS PARK, NY 11787
TOWN OF SMITHTOWN

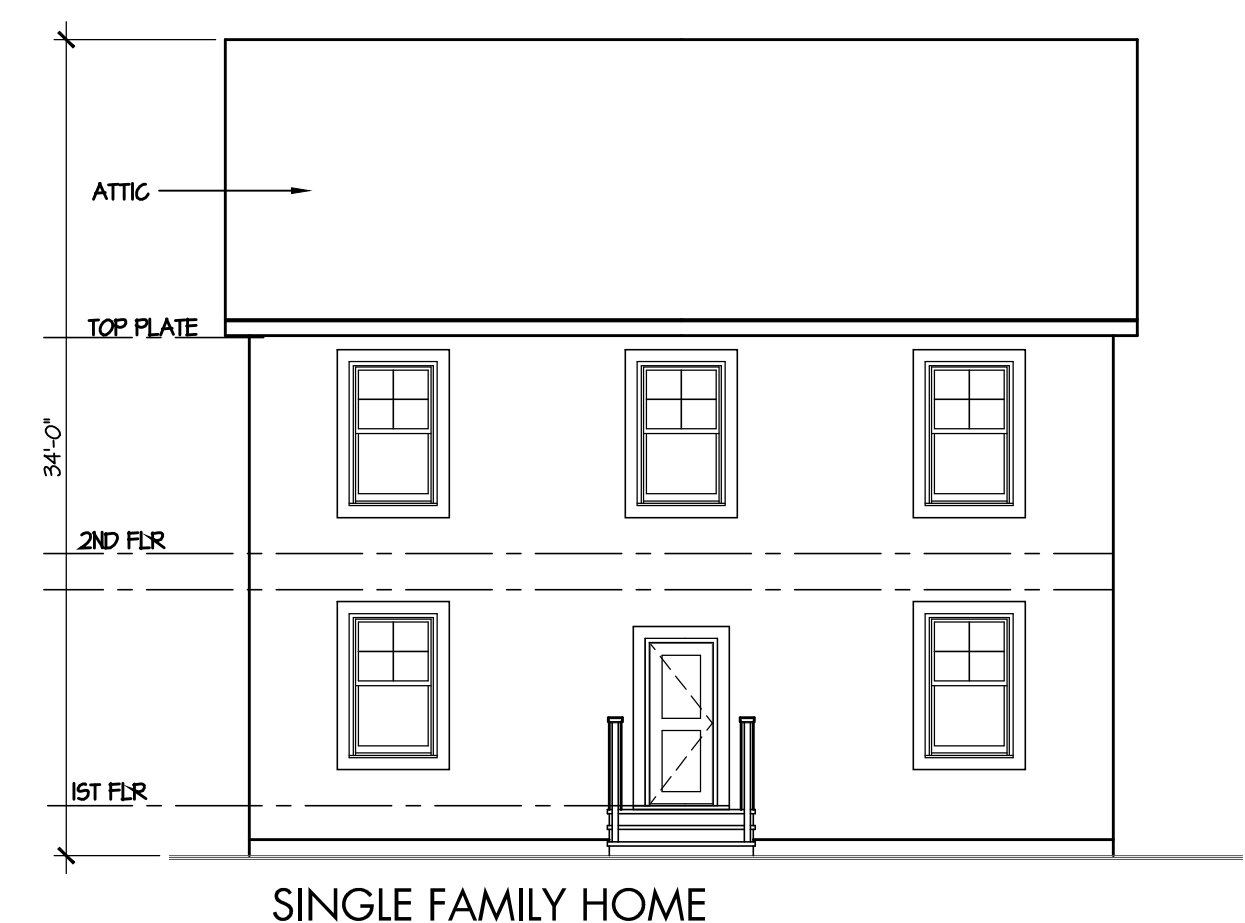
TTB PROPERTIES
TANZI TERWILLIGER BARTONE
141 Merritts Rd, 2nd Floor, Farmingdale, NY 11735
P (516) 249-2022

GRCH Architecture PC
GRCH
Architecture
Phone: (631) 864-3395
www.grcharchitecture.com

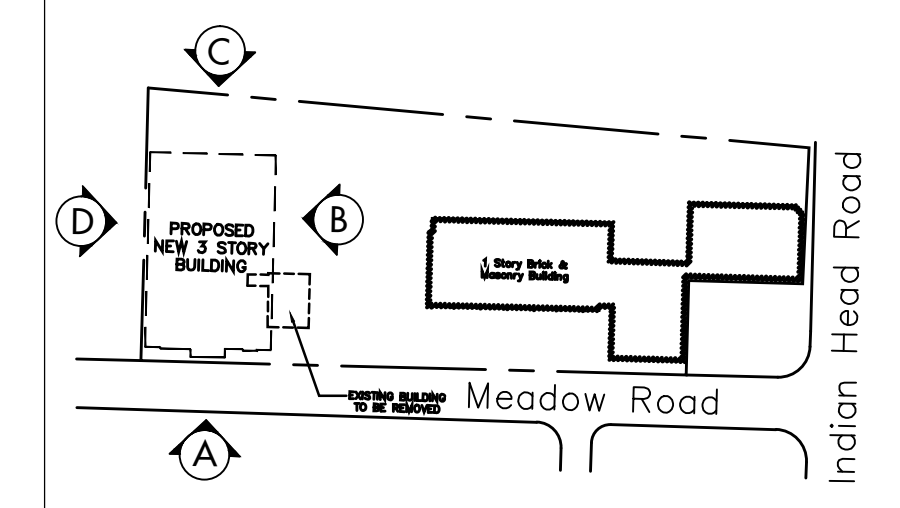
R&M ENGINEERING
Robinson & Muller
Engineers, P.C.
Huntington, NY 11743
Office: (631) 271-8878
Fax: (631) 271-8892
www.rnm-engineering.com



A PROPOSED FRONT ELEVATION FACING MEADOW RD. (SOUTH)
A4.2 SCALE: 1/8" = 1'-0"



ISSUE	REV	DATE	DESCRIPTION
14		2/12/25	SITE PLAN SUBMISSION
13		1/27/25	REV UNITS TO 46 COUNT
12		12/13/24	REV PER TOWN COMMENTS
11		6/13/24	TOWN SUBMISSION
10		6/10/24	REVISED PER CLIENT COMMENTS
9		6/5/24	SCHEME IV REVISED LAYOUT WITH NEW MAIN ENTRY RAMP
8		3/4/24	SCHEME III PARKING GARAGE FOR REVIEW
8		2/22/24	SCHEME III PARKING GARAGE FOR REVIEW
7		2/15/24	PROGRESS REVIEW
6		2/5/24	REVISED PARKING GARAGE
5		1/10/24	UNIT PLANS PROGRESS REVIEW
4		8/31/23	TOWN ELEVATION COMMENTS
3		4/04/23	PROGRESS REVISIONS
2		3/31/23	PRELIMINARY ELEVATIONS
1		3/10/23	GROUND FLOOR PLAN



KEY PLAN
SCHEME IV
PROPOSED BUILDING
ELEVATION COMPARISON

GRCH Project No.: 2023005
Scale: 1/8" = 1'-0"
Designed by: GC
Drawn by: GRCH
Checked by: GC
Date: 10 MARCH 2023